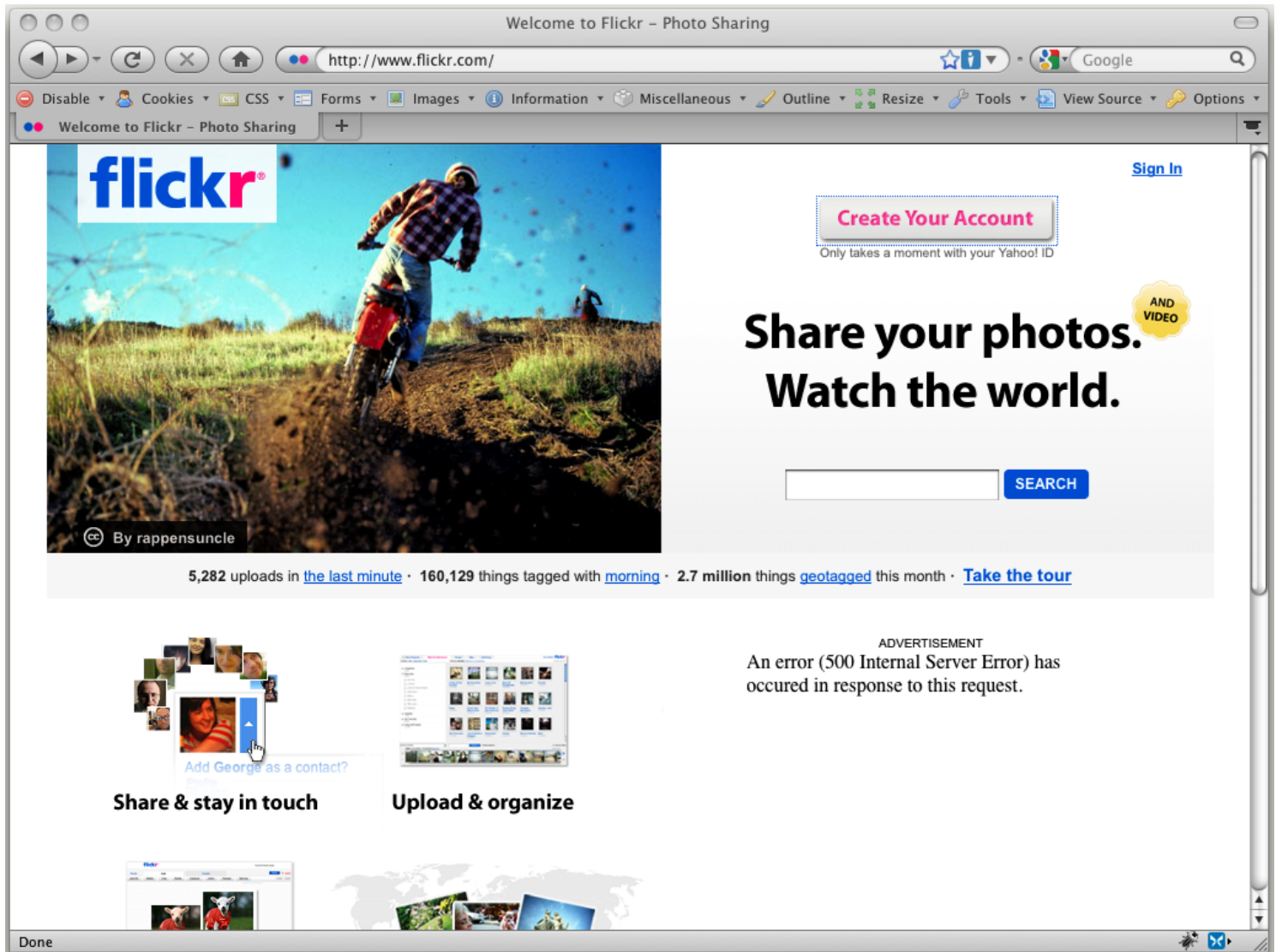


Flickr Maps Instructions

Download and implement your own Flickr + Google Maps mash-up.

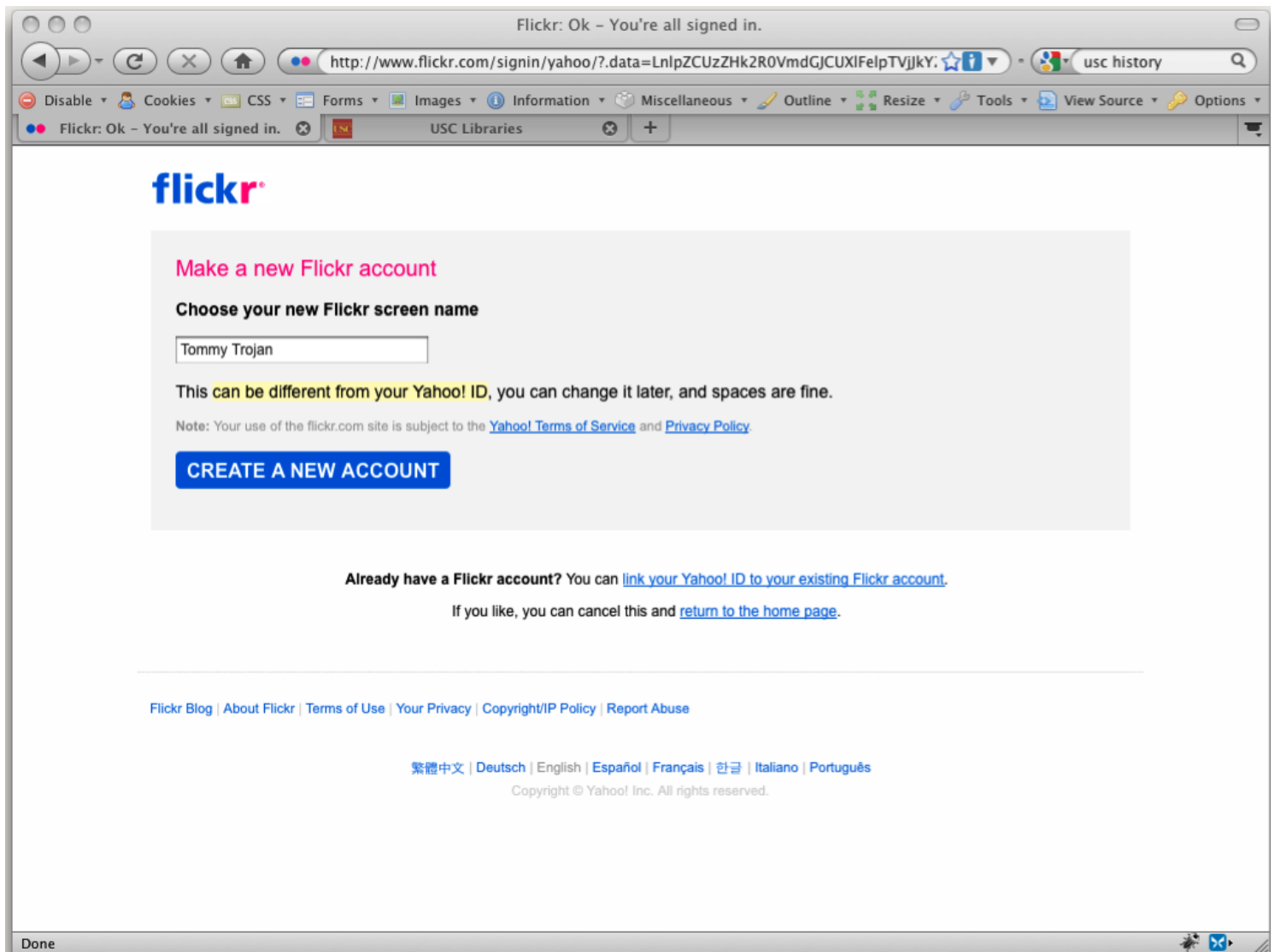
By: chrisaiv@gmail.com

Step 1



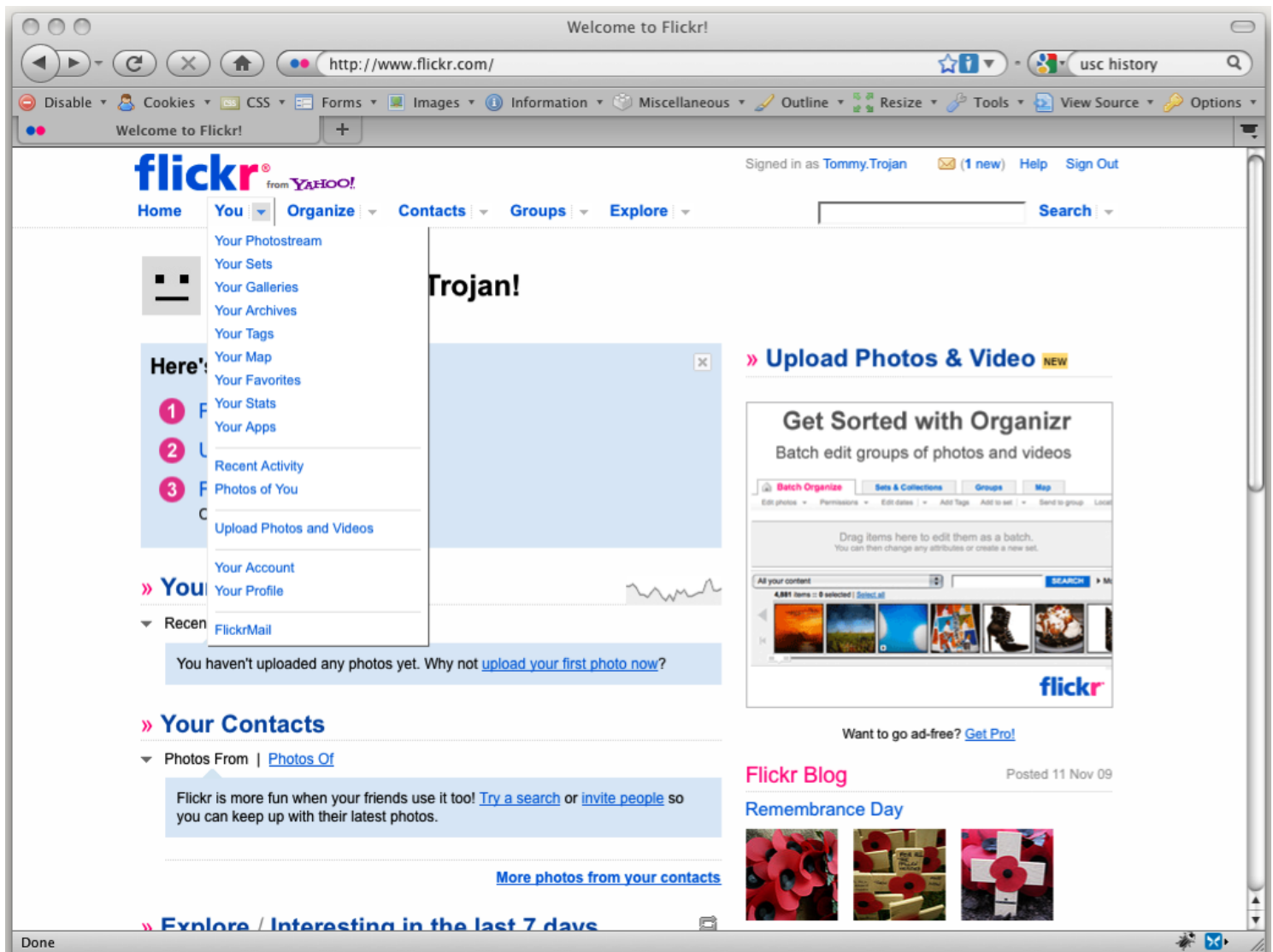
Visit <http://flickr.com> and create a new account.

Step 2



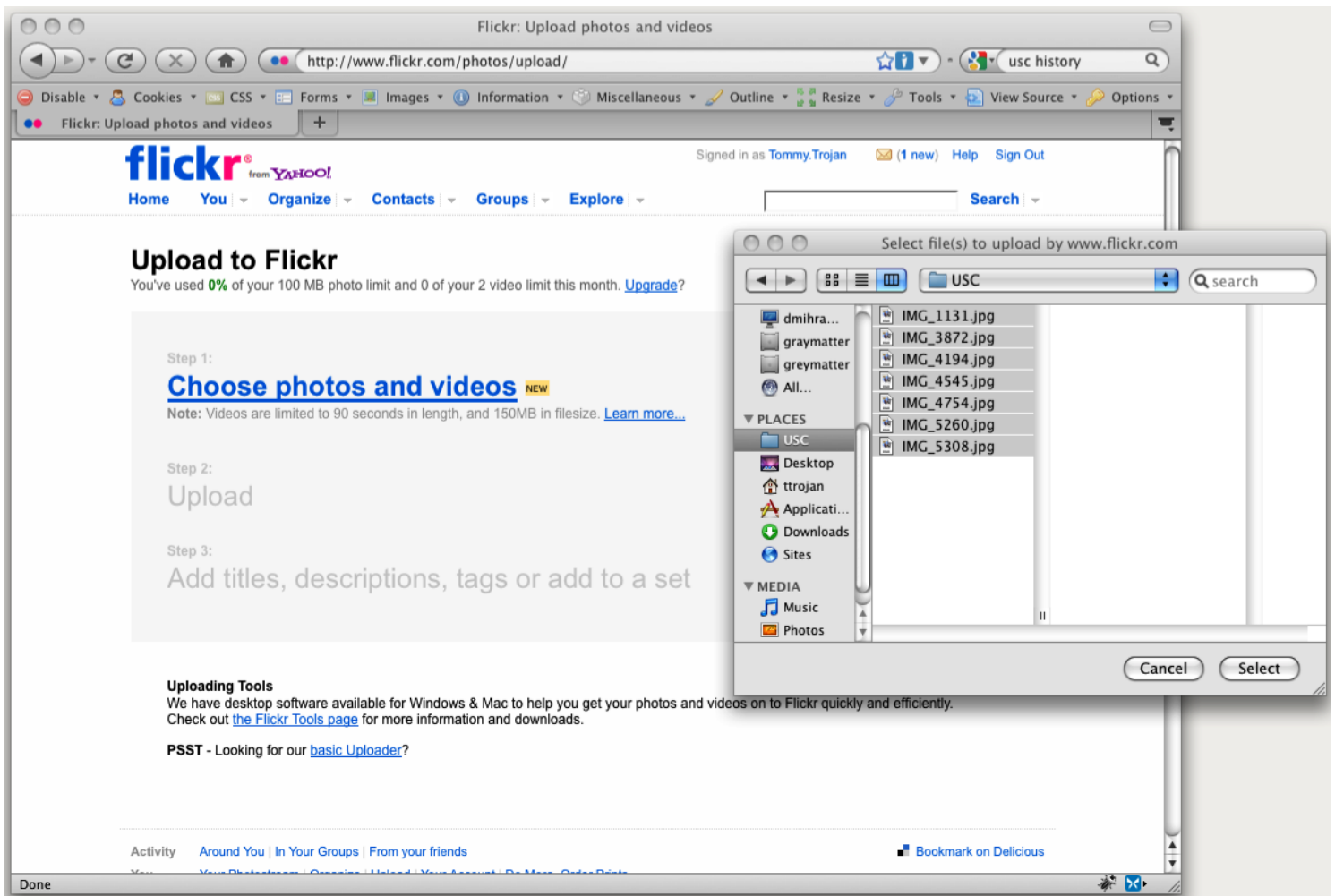
Choose a new Flickr Screen Name.

Step 3



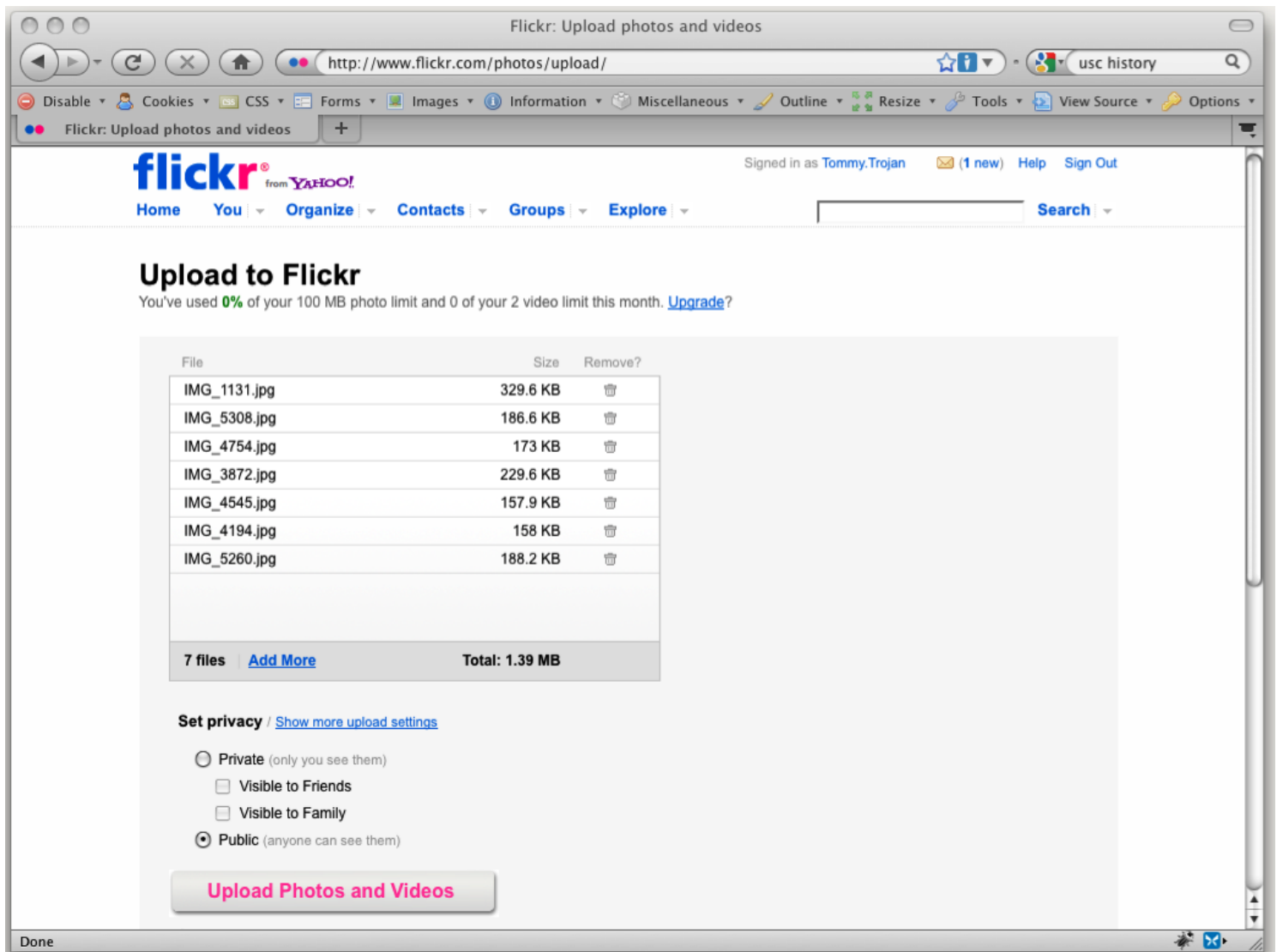
Navigate to the *You* tab and select the link *Upload Photos and Video* from the drop-down.

Step 4



The *Choose photos and videos* link will open a dialog box. Navigate and select the photos you want to upload and press *Select*.

Step 5



Confirm that the *Set privacy* radio button is set to *Public*. Then select *Upload Photos and Videos*.

Step 6

(100% complete) Flickr: Upload photos and videos

http://www.flickr.com/photos/upload/

Disable Cookies CSS Forms Images Information Miscellaneous Outline Resize Tools View Source Options

(100% complete) Flickr: Upload ph... +

flickr from YAHOO!

Signed in as [Tommy.Trojan](#) (1 new) Help Sign Out

Home You Organize Contacts Groups Explore Search


Upload to Flickr

You've used **0%** of your 100 MB photo limit and 0 of your 2 video limit this month. [Upgrade?](#)

File	Size	
IMG_1131.jpg	329.6 KB	✓
IMG_5308.jpg	186.6 KB	✓
IMG_4754.jpg	173 KB	✓
IMG_3872.jpg	229.6 KB	✓
IMG_4545.jpg	157.9 KB	✓
IMG_4194.jpg	158 KB	✓
IMG_5260.jpg	188.2 KB	✓
7 files Total: 1.39 MB		

ADVERTISEMENT

OUR NEW STARBUCKS
FLICKR GROUP IS READY FOR
YOUR BEST SHOT.
SHARE YOUR SHOTS OF STARBUCKS VIA™
[FLICKR.COM/STARBUCKS](#) WIN GREAT PRIZES!
NEVER BE WITHOUT GREAT COFFEE
STARBUCKS VIA READY BREW

 **Finished!** Next: [add a description](#), perhaps?

Uploading Tools
We have desktop software available for Windows & Mac to help you get your photos and videos on to Flickr quickly and efficiently. Check out [the Flickr Tools page](#) for more information and downloads.

PSST - Looking for our [basic Uploader](#)?

Done

Once your images have uploaded, select the *add a description* link.

Step 7

Flickr: Upload photos and videos

http://www.flickr.com/photos/upload/done/

Signed in as Tommy.Trojan (1 new) Help Sign Out

Home You Organize Contacts Groups Explore Search

Describe this upload




Or, [open in Organizer](#) for more fine-grained control.

Batch operations

Add Tags [?](#)

Add to a Set [Create a new Set...](#)

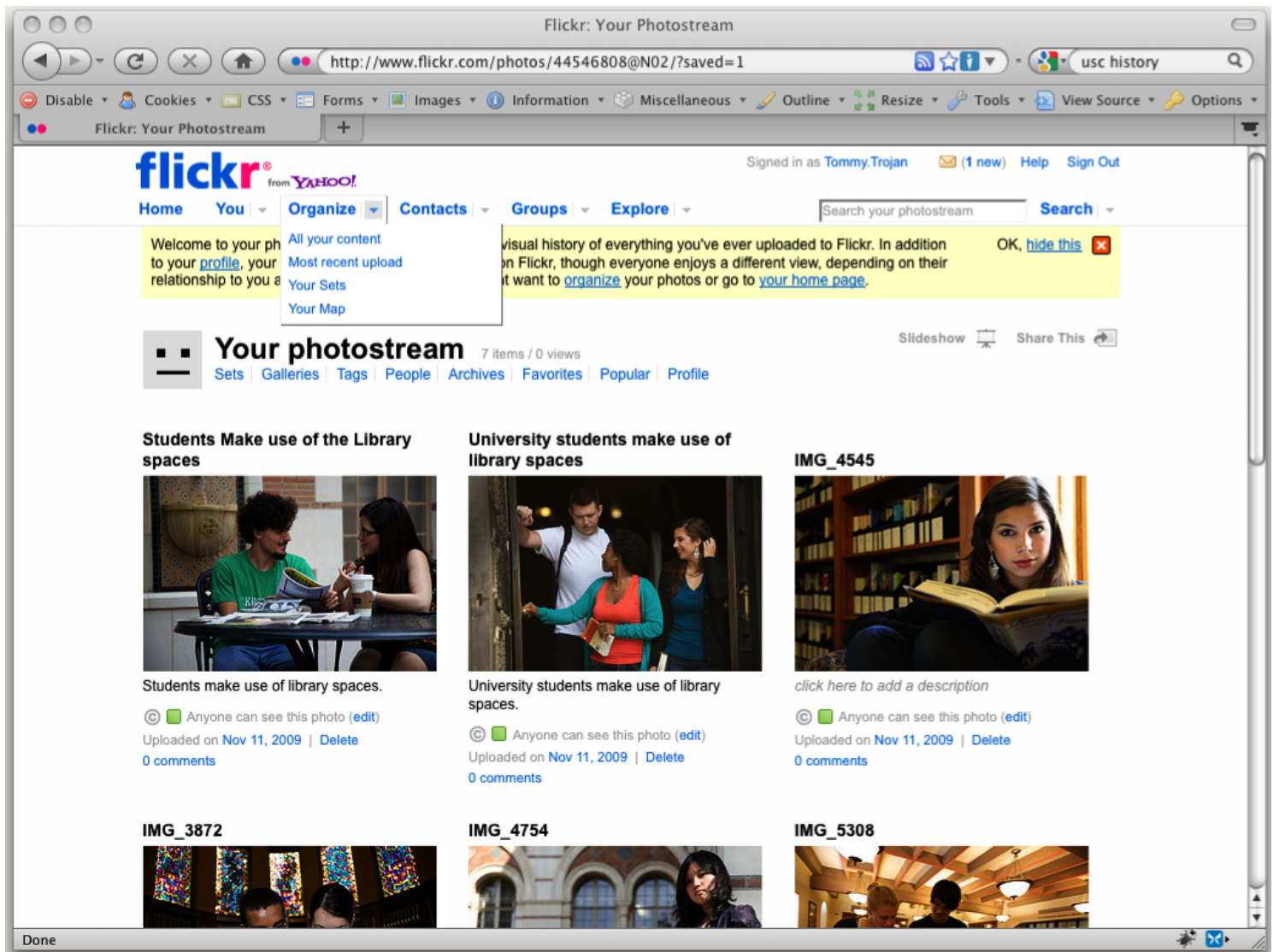
Titles, descriptions, tags

		
Title: <input type="text" value="dents Make use of the Library spaces"/>	Title: <input type="text" value="y students make use of library spaces"/>	Title: <input type="text" value="IMG_4545"/>
Description: <input type="text" value="Students make use of library spaces."/>	Description: <input type="text" value="University students make use of library spaces."/>	Description: <input type="text"/>
Tags: <input type="text" value="books collaboration learning library student"/>	Tags: <input type="text" value="books collaboration library student Students"/>	Tags: <input type="text"/>

Done

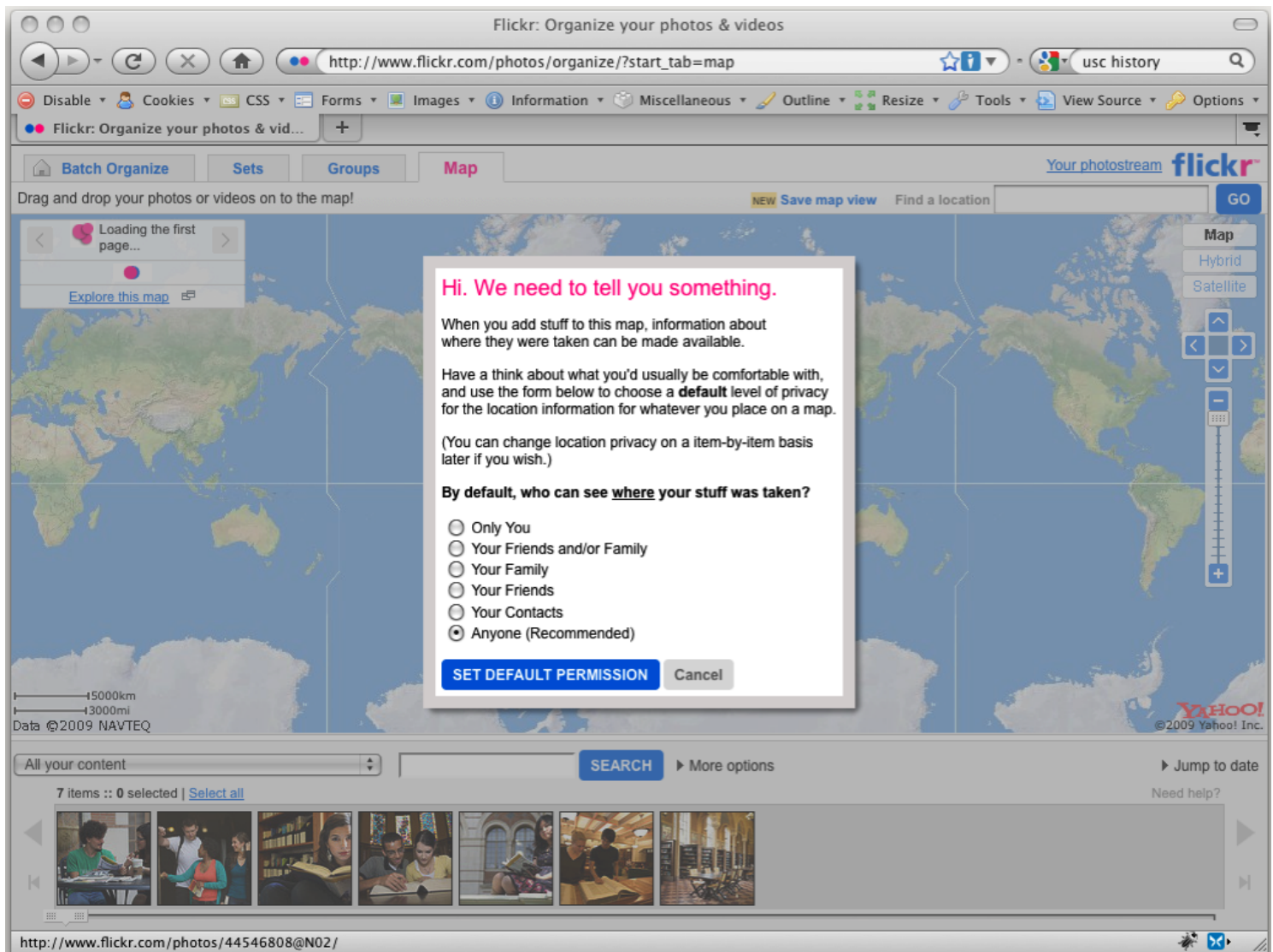
Add Titles and Descriptions to your images then click Save.

Step 8



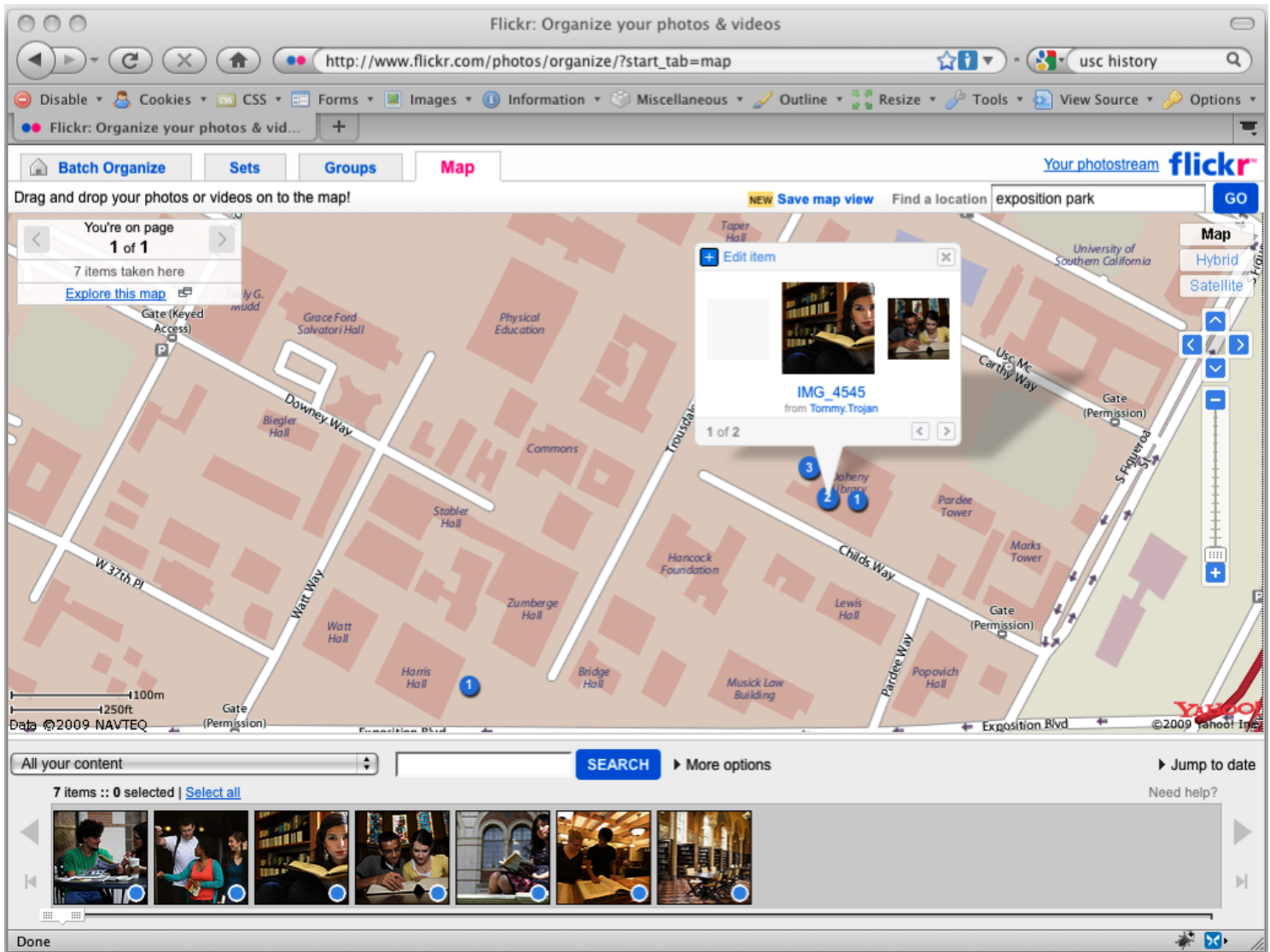
Now that Titles and Descriptions have been successfully saved, let's add Geo Coordinates to your images. Navigate to the *Organize* tab near the main menu and select *Your Map*.

Step 9



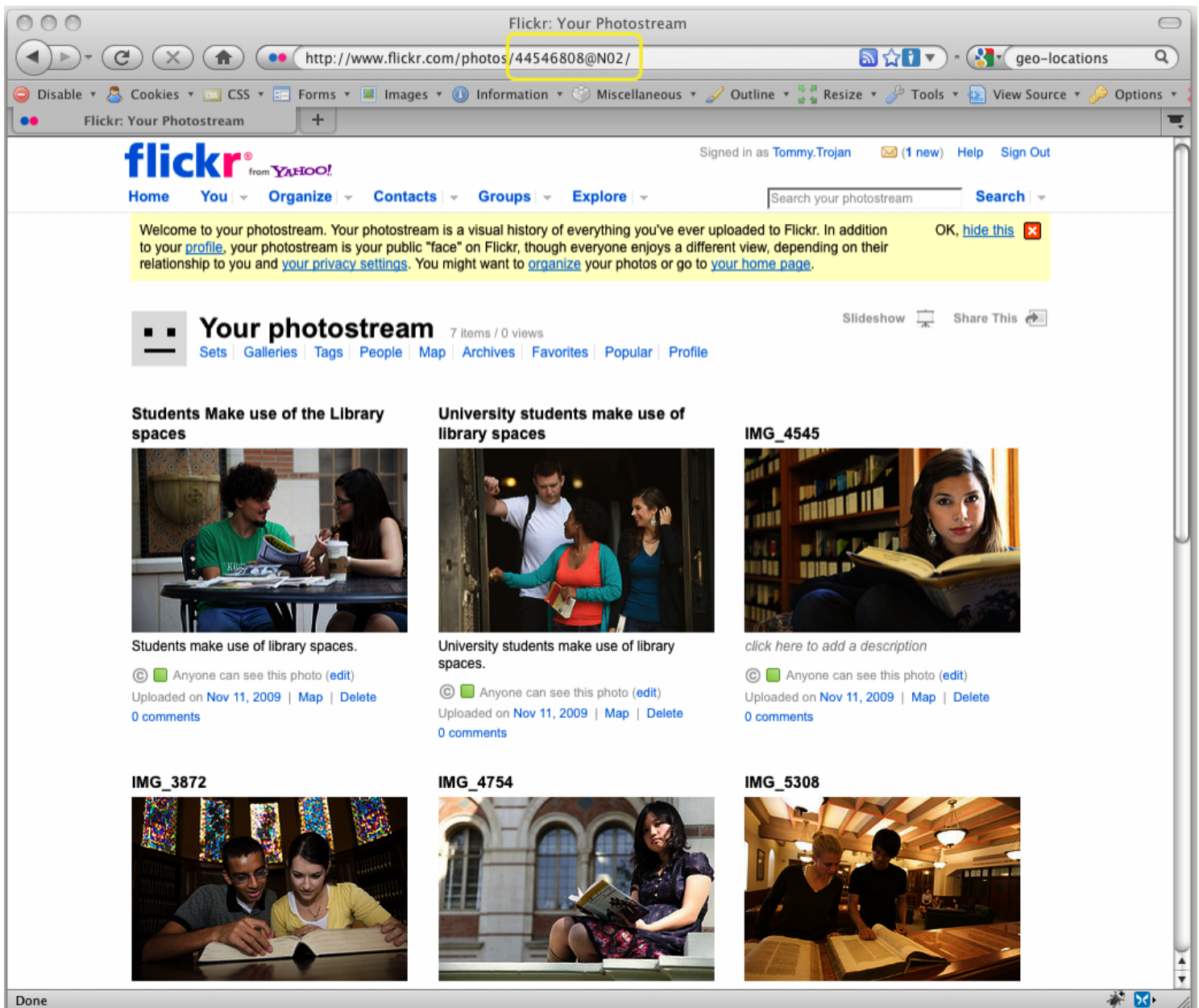
Confirm that the radio button next to *Anyone (Recommended)* is selected and click *Set Default Permission*.

Step 10



Use the navigational tools to focus on a geographical region, then drag the images to their appropriate geographical locations. Once all the images are geo-tagged, select the link *Your photostream*.

Step 11



Record your profile id which is the alpha numeric number found in the URL address. This account ID happens to be "44546808@N02". You are now done with Flickr and ready to acquire a Google Maps API key.

Step 12

The screenshot shows a web browser window with the address bar displaying `http://code.google.com/apis/maps/signup.html`. The page title is "Sign Up for the Google Maps API - Google Maps API - Google Code". The browser's toolbar includes buttons for back, forward, home, and search, along with various toolbars like CSS, Forms, Images, and Information. The Google Code logo is visible in the top left, with a search bar and a link to "Faster JavaScript with Closure Tools".

The main heading is "Sign Up for the Google Maps API". Below it, a paragraph explains that the Google Maps API allows embedding Google Maps in web pages and that a single API key is valid for a single directory or domain. It also mentions the requirement of a Google Account.

A section titled "Here are some highlights from the terms for those of you who aren't lawyers:" lists several key points:

- **There is no limit on the number of page views you may generate per day using the Maps API.** See this [FAQ](#) for more information.
- **There is a limit on the number of geocode requests per day.** See this [FAQ](#) for more information.
- **The Maps API does not include advertising.** If we ever decide to change this policy, we will give you at least 90 days notice via the [announcements lists](#).
- If you use other APIs in conjunction with the Maps API, you should also review the terms for the other APIs. Note in particular that the [GoogleBar](#) in the JS Maps API uses the AJAX Search API, and that API has its own terms.
- **Your service must be freely accessible to end users.** To use Google mapping technology in other types of applications, please use [Google Maps API Premier](#). See this [FAQ](#) for more information.
- **You may not alter or obscure the logos or attribution on the map.**
- You must [indicate whether your application is using a sensor](#) (such as a GPS locator) to determine the user's location.
- You may use the API (except for the Static Maps API) in websites or in software applications. For websites, please sign up with the URL where your implementation can be found. For other software applications, please sign up with the URL of the page where your application can be downloaded.
- Google will upgrade the APIs periodically. To be notified of updates, please subscribe to the [announcements lists](#).
- Remember that we reserve the right to suspend or terminate your use of the service at any time, so please read through the [FAQ](#) and [forum posts](#) to decide whether your site meets the Terms of Use before you begin API integration.

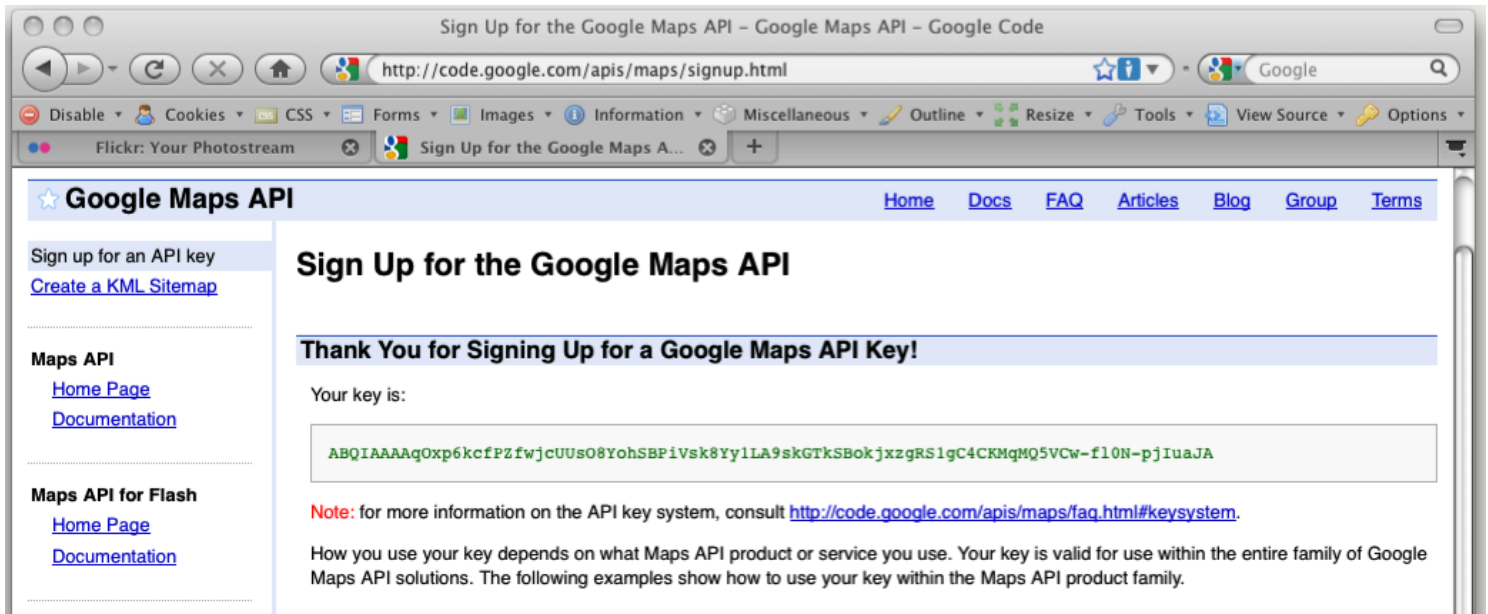
Below the list, a box states "Last updated: November 26, 2008".

The next section is "1. Your relationship with Google." followed by "1.1 Use of the Service is Subject to these Terms." It explains that the use of Google Maps/Google Earth APIs is subject to the terms of a legal agreement between the user and Google Inc., whose principal place of business is at 1600 Amphitheatre Parkway, Mountain View, California 94043, United States ("Google"). This legal agreement is referred to as the "Terms".

At the bottom, there is a checkbox labeled "I have read and agree with the terms and conditions ([printable version](#))" which is checked. Below this is a text input field for "My web site URL:" with the value "http://usc.edu". A tip states: "Tip: Signing up a key for `http://yourdomain.com` is usually the best practice, as it will work for all subdomains and directories. See this [FAQ](#) for more information." A "Generate API Key" button is located at the bottom of the form.

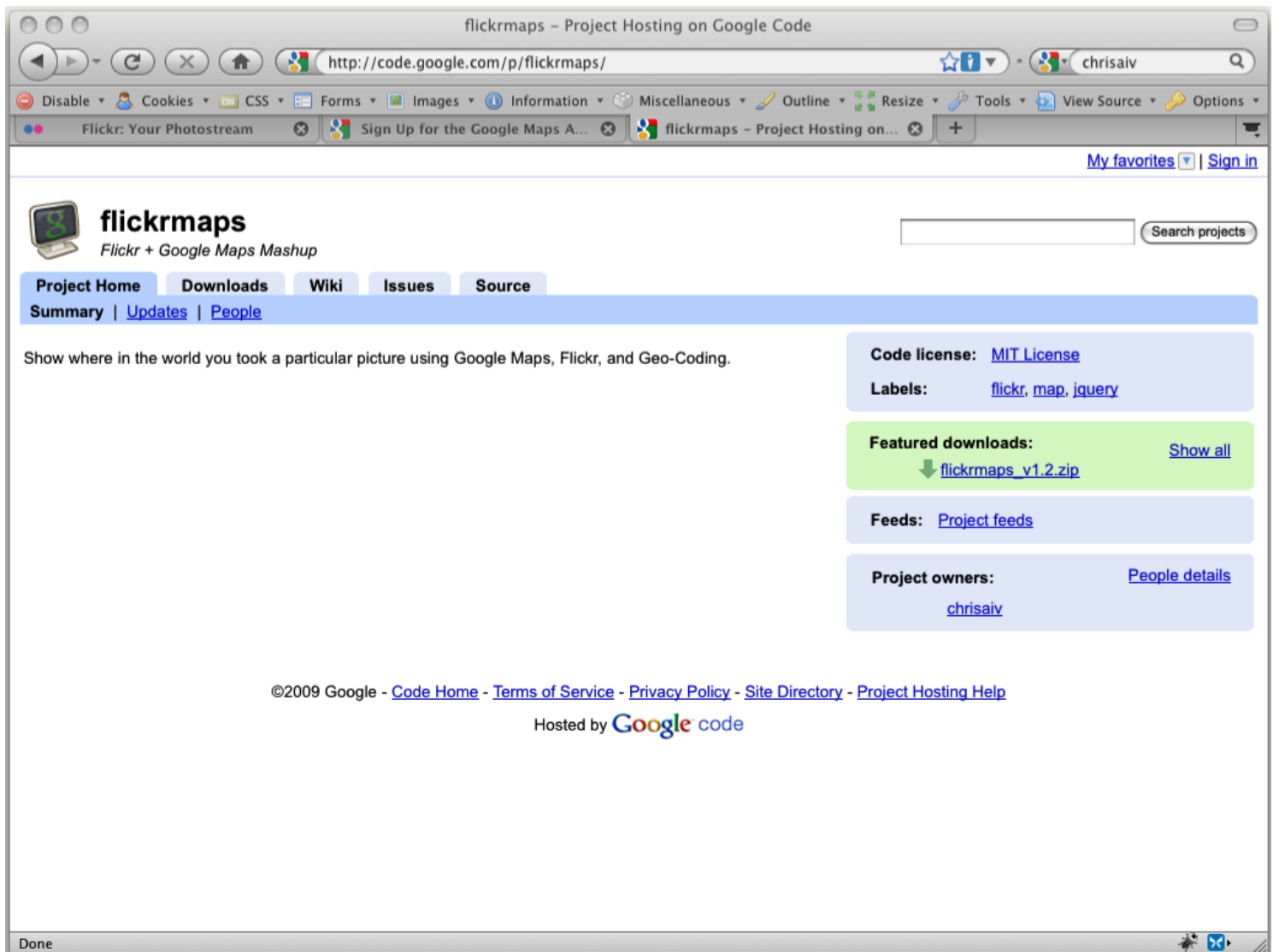
Visit <http://code.google.com/apis/maps/signup.html> and sign up for a Google Maps API Key. You might be required to log in using a Google account.

Step 13



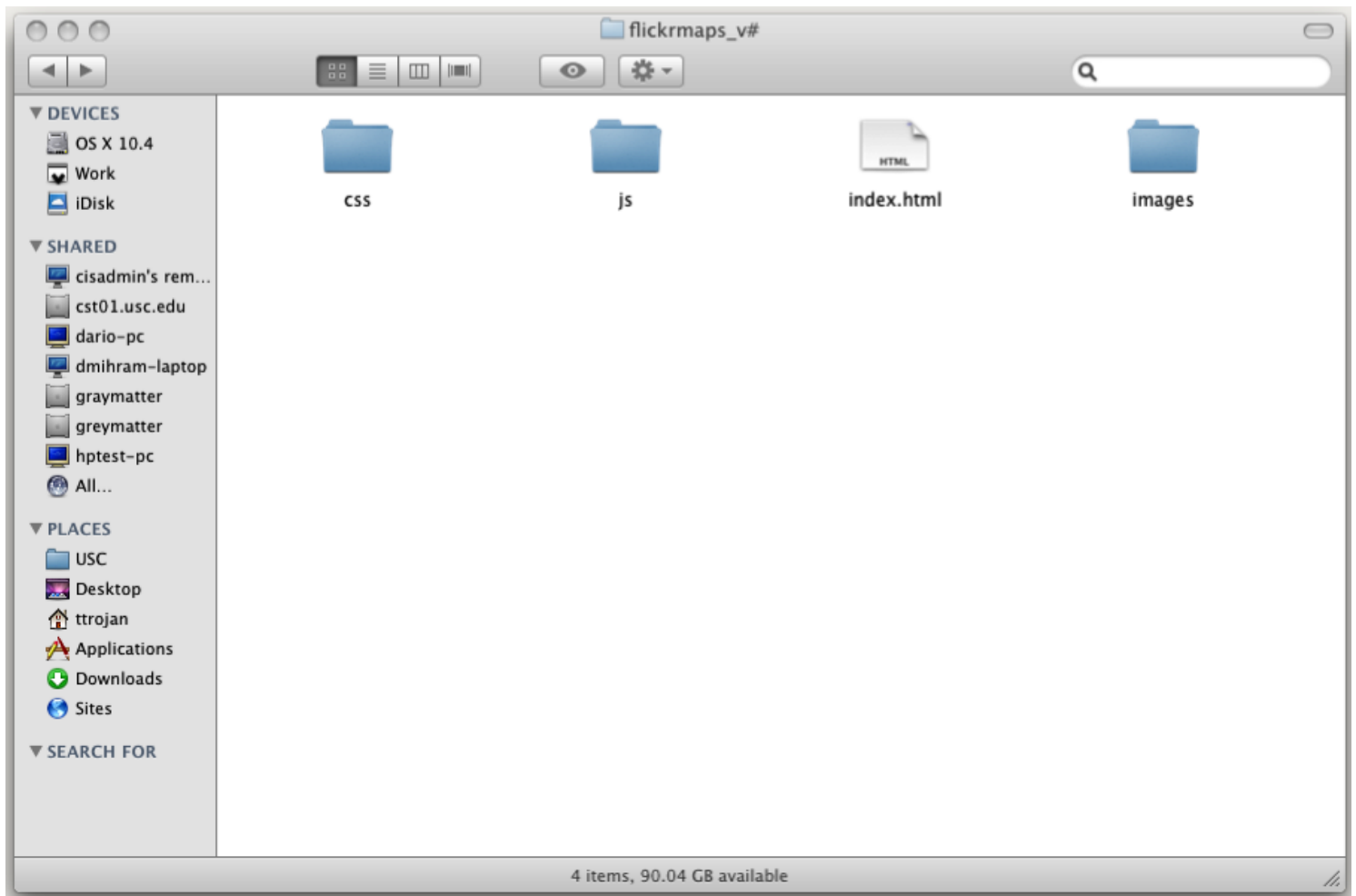
Upon successful log-in, you will be granted a API key. You are now finished with Google Maps. The next step is to mash up Google Maps and Flickr.

Step 14



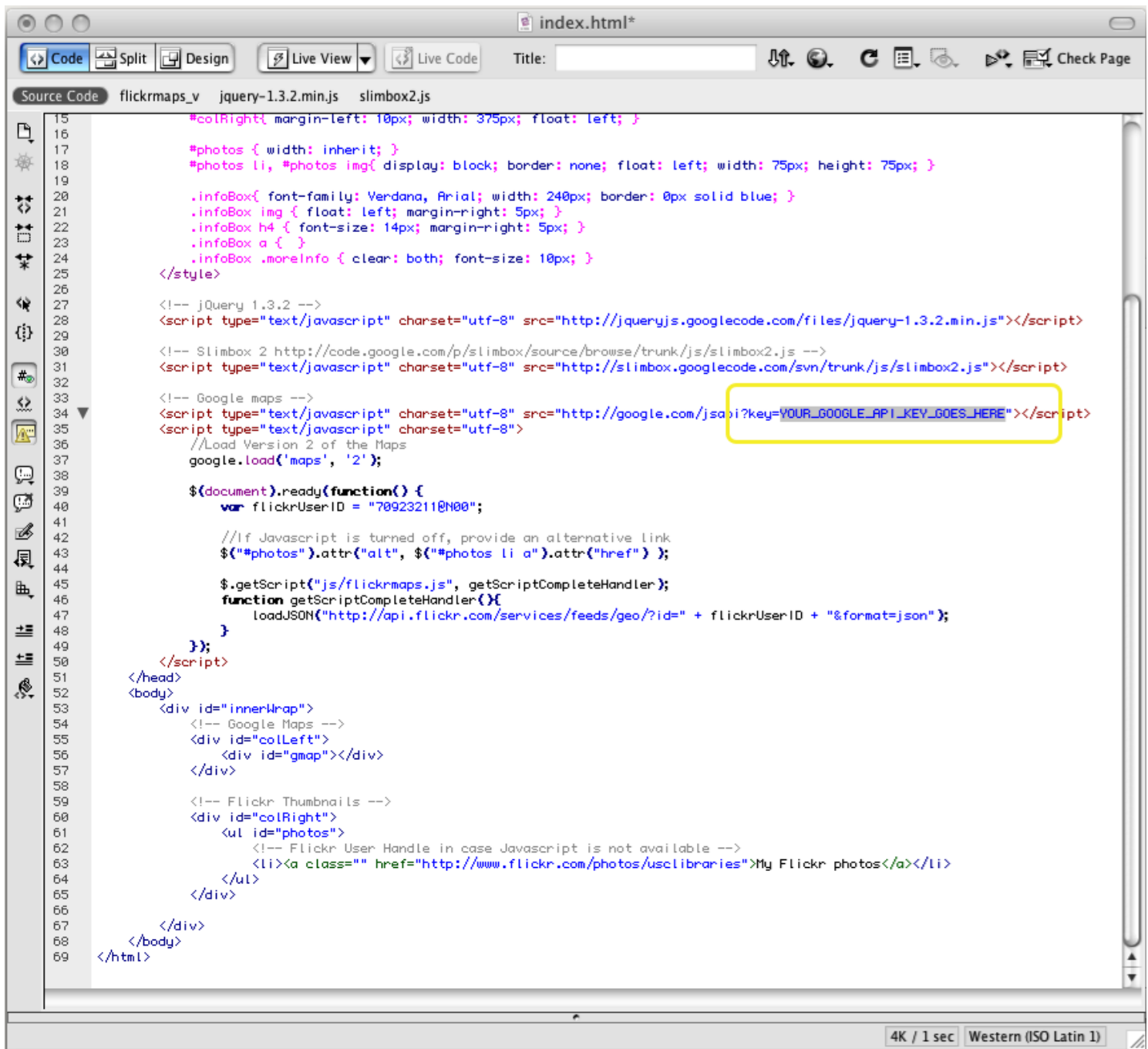
Visit <http://code.google.com/p/flickrmaps/> and download the Zip package found beneath *Featured downloads*.

Step 15



Navigate to the /flickrmaps directory that you extracted and open "index.html" a text editor such as Dreamweaver, TextMate, BBEdit, or Notepad.

Step 16



```
15      #colRight{ margin-left: 10px; width: 375px; float: left; }
16
17      #photos { width: inherit; }
18      #photos li, #photos img{ display: block; border: none; float: left; width: 75px; height: 75px; }
19
20      .infoBox{ font-family: Verdana, Arial; width: 240px; border: 0px solid blue; }
21      .infoBox img { float: left; margin-right: 5px; }
22      .infoBox h4 { font-size: 14px; margin-right: 5px; }
23      .infoBox a { }
24      .infoBox .moreInfo { clear: both; font-size: 10px; }
25    </style>
26
27    <!-- jQuery 1.3.2 -->
28    <script type="text/javascript" charset="utf-8" src="http://jqueryjs.googlecode.com/files/jquery-1.3.2.min.js"></script>
29
30    <!-- Slimbox 2 http://code.google.com/p/slimbox/source/browse/trunk/js/slimbox2.js -->
31    <script type="text/javascript" charset="utf-8" src="http://slimbox.googlecode.com/svn/trunk/js/slimbox2.js"></script>
32
33    <!-- Google maps -->
34    <script type="text/javascript" charset="utf-8" src="http://google.com/jsapi?key=YOUR_GOOGLE_API_KEY_GOES_HERE"></script>
35    <script type="text/javascript" charset="utf-8">
36      //Load Version 2 of the Maps
37      google.load('maps', '2');
38
39      $(document).ready(function() {
40        var flickrUserID = "70923211@N00";
41
42        //If Javascript is turned off, provide an alternative link
43        $("#photos").attr("alt", $("#photos li a").attr("href"));
44
45        $.getScript("js/flickrmaps.js", getScriptCompleteHandler);
46        function getScriptCompleteHandler(){
47          loadJSON("http://api.flickr.com/services/feeds/geo?id=" + flickrUserID + "&format=json");
48        }
49      });
50    </script>
51  </head>
52  <body>
53    <div id="innerWrap">
54      <!-- Google Maps -->
55      <div id="colLeft">
56        <div id="gmap"></div>
57      </div>
58
59      <!-- Flickr Thumbnails -->
60      <div id="colRight">
61        <ul id="photos">
62          <!-- Flickr User Handle in case Javascript is not available -->
63          <li><a class="" href="http://www.flickr.com/photos/usclibraries">My Flickr photos</a></li>
64        </ul>
65      </div>
66    </div>
67  </body>
68 </html>
```

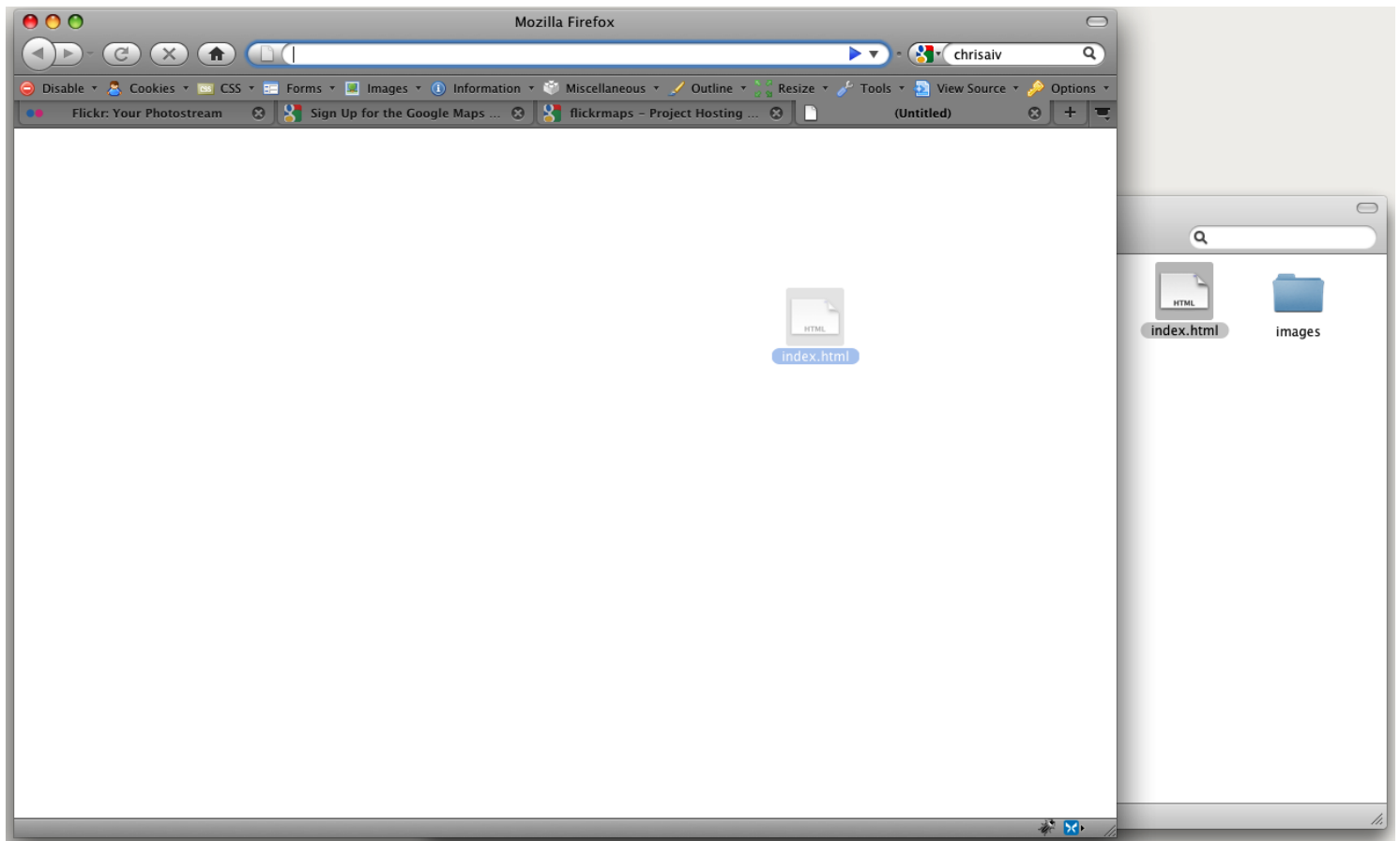
Find and replace the text "YOUR_GOOGLE_API_KEY_GOES_HERE" with your new Google Maps API Key.

Step 17

```
15      *colRight{ margin-left: 10px; width: 375px; float: left; }
16
17      *photos { width: inherit; }
18      *photos li, *photos img{ display: block; border: none; float: left; width: 75px; height: 75px; }
19
20      .infoBox{ font-family: Verdana, Arial; width: 240px; border: 0px solid blue; }
21      .infoBox img { float: left; margin-right: 5px; }
22      .infoBox h4 { font-size: 14px; margin-right: 5px; }
23      .infoBox a { }
24      .infoBox .moreInfo { clear: both; font-size: 10px; }
25  </style>
26
27  <!-- jQuery 1.3.2 -->
28  <script type="text/javascript" charset="utf-8" src="http://jqueryjs.googlecode.com/files/jquery-1.3.2.min.js"></script>
29
30  <!-- Slimbox 2 http://code.google.com/p/slimbox/source/browse/trunk/js/slimbox2.js -->
31  <script type="text/javascript" charset="utf-8" src="http://slimbox.googlecode.com/svn/trunk/js/slimbox2.js"></script>
32
33  <!-- Google maps -->
34  <script type="text/javascript" charset="utf-8" src=
35  "http://google.com/jsapi?key=ABQIAAAQ0xp6kcfPZfwjCUUs08YohSBPivsk8Vy1LA9skGTkSBokjxzgRS1gC4CKMqMQ5VCw-fL0N-pjIuaJA"></script>
36  <script type="text/javascript" charset="utf-8">
37    //Load Version 2 of the Maps
38    google.load('maps', '2');
39
40    $(document).ready(function() {
41      var flickrUserID = "445468080N02";
42
43      //If Javascript is turned off, provide an alternative link
44      $("#photos").attr("alt", $("#photos li a").attr("href") );
45
46      $.getScript("js/flickrmaps.js", getScriptCompleteHandler);
47      function getScriptCompleteHandler(){
48        loadJSON("http://api.flickr.com/services/feeds/geo/?id=" + flickrUserID + "&format=json");
49      }
50    });
51  </script>
52  </head>
53  <body>
54    <div id="innerWrap">
55      <!-- Google Maps -->
56      <div id="colLeft">
57        <div id="gmap"></div>
58      </div>
59
60      <!-- Flickr Thumbnails -->
61      <div id="colRight">
62        <ul id="photos">
63          <!-- Flickr User Handle in case Javascript is not available -->
64          <li><a class="" href="http://www.flickr.com/photos/445468080N02">My Flickr photos</a></li>
65        </ul>
66      </div>
67    </div>
68  </body>
69  </html>
```

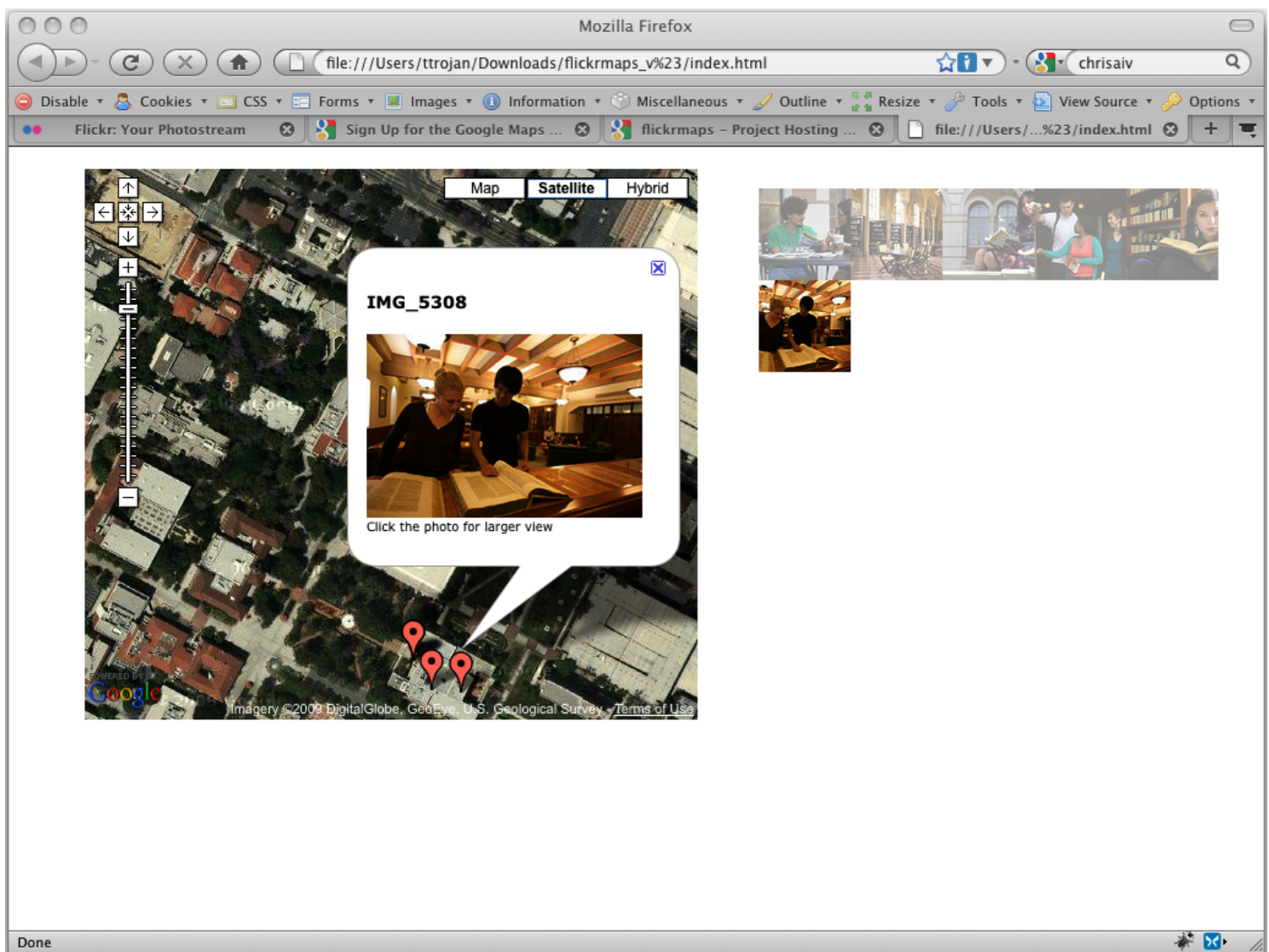
Find and replace the text titled *var flickrUserID* with your Flickr User/Account ID.

Step 18



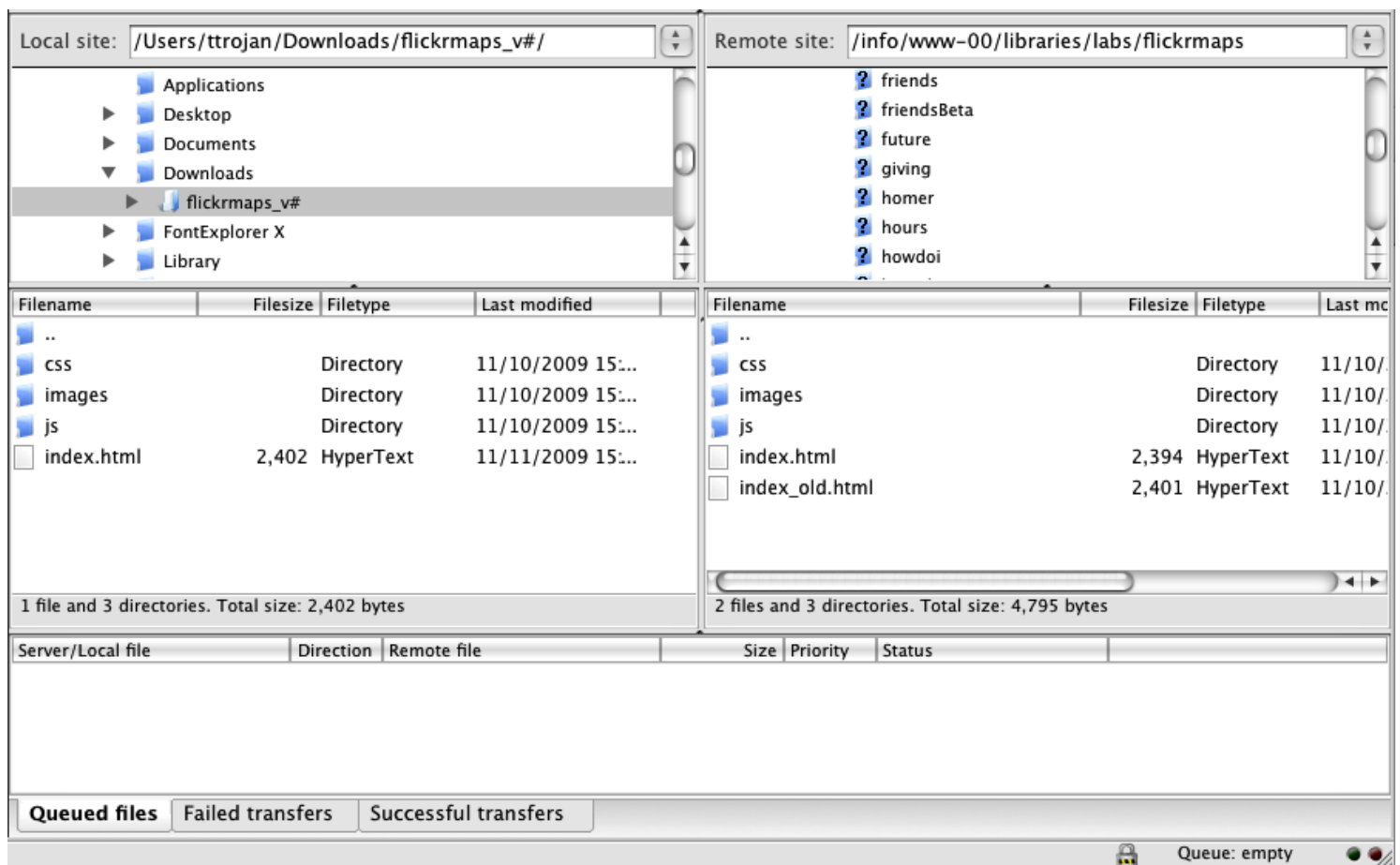
If you'd like to double check your work, simply open a new tab or browser window and load *index.html*.

Step 19



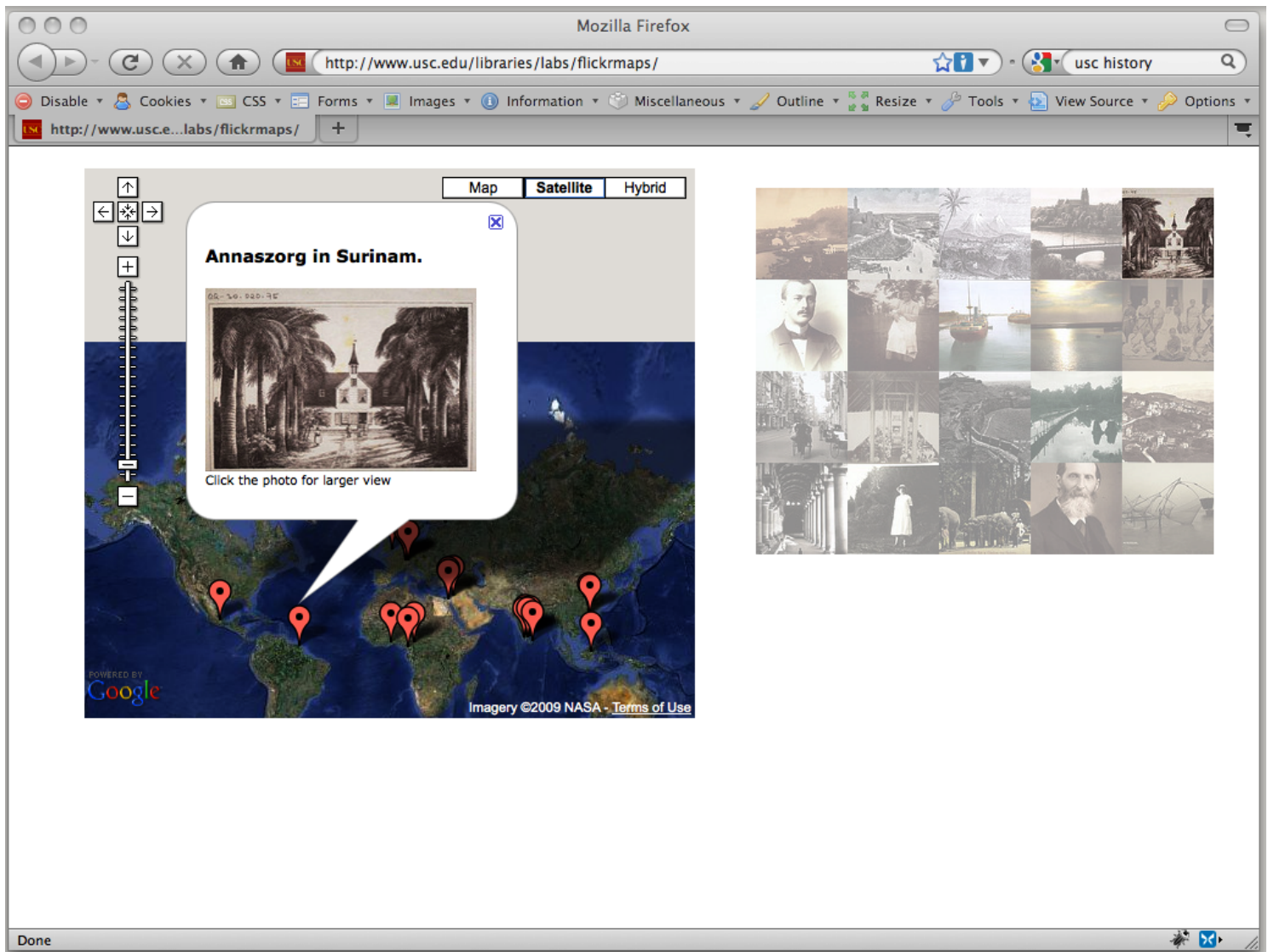
You can always customize the image gallery using XHTML and Cascading Style Sheets.

Step 20



The final step is to use an FTP application such as Filezilla (<http://filezilla-project.org/download.php?type=client>) to upload the three directories (`/css`, `/images`, `/js`) and `index.html` to your personal server.

Step 21



You're done!